

# HELPORT

AI Labor Infrastructure

We don't sell AI tools — we deliver *AI labor*.

NASDAQ: HPAI | June 2026 | [ir.helpport.ai](https://ir.helpport.ai)

# Disclaimer

## Forward-Looking Statements

This presentation (together with oral statements made in connection herewith, the "Presentation") has been prepared exclusively for informational purposes on a confidential basis and is only directed at persons to whom such Presentation made lawfully be communicated. By accepting delivery of this Presentation, the recipient agrees it will hold the information herein in strict confidence, will not reproduce or disclose such information to any third party in whole or in part, and will use such information solely for the purpose of evaluating its investment in Helport AI Limited ("we," "us," "our," "Helport AI" or the "Company").

Certain information set forth in this Presentation contains "forward-looking information", including "future-oriented financial information" and "financial outlook", under applicable U.S. securities laws (collectively referred to herein as "forward-looking statements"). Except for statements of historical fact, the information contained herein constitutes forward-looking statements and includes, but is not limited to, the (i) projected financial performance of the Company; (ii) the expected development of the Company's business, projects, and joint ventures; (iii) execution of the Company's vision and growth strategy, including with respect to future mergers and acquisitions ("M&A") activity and global growth; [(iv) sources and availability of third-party financing for the Company's projects; (v) completion of the Company's projects that are currently underway, in development or otherwise under consideration;] (vi) renewal of the Company's current customer, supplier and other material agreements; and (vii) future liquidity, working capital, and capital requirements. The words "anticipate," "believe," "continue," "could," "estimate," "expect," "intends," "may," "might," "plan," "possible," "potential," "predict," "project," "should," "would" and similar expressions may identify forward-looking statements, but the absence of these words does not mean that a statement is not forward-looking. Forward-looking statements are provided to allow potential investors the opportunity to understand management's beliefs and opinions in respect of the future so that they may use such beliefs and opinions as one factor in evaluating an investment.

These statements are not guarantees of future performance and undue reliance should not be placed on them. Such forward-looking statements necessarily involve known and unknown risks and uncertainties, which may cause actual performance and financial results in future periods to differ materially from any projections of future performance or result expressed or implied by such forward-looking statements.

Although forward-looking statements contained in this Presentation are based upon what management of the Company believes are reasonable assumptions, there can be no assurance that forward-looking statements will prove to be accurate, as actual results and future events could differ materially from those anticipated in such statements. The Company undertakes no obligation to update forward-looking statements if circumstances or management's estimates or opinions should change except as required by applicable securities laws. The reader is cautioned not to place undue reliance on forward-looking statements.

The Company obtained the information in this Presentation from internal estimates and research, industry publications and research, surveys and studies conducted by third parties. The Company believes its estimates to be accurate as of the date of this Presentation. However, information herein may prove to be inaccurate because of the method by which the Company obtained such information or because the information cannot be verified due to limits on the availability and reliability of raw data or the voluntary nature of certain data gathering processes used in the development of such information. This Presentation does not constitute an offer to sell or the solicitation of an offer to buy any securities, nor shall there be any offer or sale of the Company's securities in any state or jurisdiction in which such offer or sale would be unlawful prior to registration or qualification under the securities laws of such state or jurisdiction.

# Disclaimer

## Use of Projections

This Presentation may contain projected financial information with respect to the Company. Such projected financial information constitutes as forward-looking statements, is for illustrative purposes only and should not be relied upon as being predictive of future results. These projections should not be relied upon as being indicative of future results. Furthermore, neither the Company nor its management team can give any assurance that the forecasts or projections contained herein accurately represents the Company's future operations or financial condition. The assumptions and estimates underlying such financial forecast information are inherently uncertain and are subject to a wide variety of significant business, economic, competitive and other risks and uncertainties that could cause actual results to differ materially from those contained in such prospective financial information. Accordingly, there can be no assurance that the prospective results are indicative of the future performance of the Company or that actual results will not differ materially from those presented in these materials. Some of the assumptions upon which the projections are based inevitably will not materialize and unanticipated events may occur that could affect results. Therefore, actual results achieved during the periods covered by the projections may vary and may vary materially from the projected results. Inclusion of the prospective financial information in this Presentation should not be regarded as a representation by any person that the results contained in the prospective financial information are indicative of future results or will be achieved.

## Financial Information

The projected financial information contained in this Presentation has been taken from or prepared based on the historical financial statements of the Company for the periods presented. The Company's independent public accountants have not examined, audited, reviewed, compiled or performed any procedures with respect to any projections for the purpose of their inclusion in this Presentation or any other purpose, and accordingly, do not express an opinion or other form of assurance with respect to such projections. A complete review of the Company's financial statements could cause actual results to differ materially from those contained this Presentation.

## Industry and Market Data

Certain information contained in this Presentation relates to or is based on studies, publications, surveys and the Company's own internal estimates and research. In addition, all of the market data included in this Presentation involves a number of assumptions and limitations, and there can be no guarantee as to the reasonableness, accuracy or reliability of such assumptions or the accuracy or completeness of any projections or modeling or any other information contained herein. Any comparison of the Company to the industry or to any of its competitors is based on this publicly available information and statistics and such comparisons assume the reliability of the information available to the Company. The Company obtained this information and statistics from third-party sources, including reports by market research firms and company filings. Finally, while the Company believes its research is reliable, such research has not been verified by any independent source and none of the Company, nor any of its affiliates nor any of its control persons, officers, directors, employees or representatives make any representation or warranty with respect to the accuracy of such information, including, but not limited to, any warranties of merchantability or fitness for a particular purpose or use, and they expressly disclaim any responsibility or liability for direct, indirect, incidental, exemplary, compensatory, punitive, special or consequential damages, costs expenses, legal fees or losses (including lost income or profits and opportunity costs) in connection with the use of the information herein. Any data on past performance or modeling contained herein is not an indication as to future performance.

# AI Labor Platform

Transforming scarce human expertise into **replicable, scalable productivity**



## Mission

Transforming human expertise into scalable AI labor.



## Global Presence

Dual Headquarters: Singapore & San Diego, USA  
Regional Offices: China, The Philippines, Mexico, Thailand, Indonesia



## Industries Served

Mortgage, Banking, Public Services, Insurance, BPO Services, Consumer Finance, E-Commerce, and more



## Key Numbers

**40,000+**

Active Software Users

**6 Billion**

Supported Conversations

**\$34.9M**

Revenue FY 2025

**\$1.9M**

Net Income FY 2025



## Trusted By Top Brands



# Investment Highlights

- Profitable, global technology company with a **track record of success**.
- AI labor platform focused on **enterprise customer communication**.
- **Large addressable markets** primed for disruption.
- Mature, scalable technology **grows sales and reduces operational costs**

## Massive TAM

The enterprise customer communications market exceeds \$250B—and largely depends on human labor. Enterprise AI still fails with leveraging proprietary knowledge, replicating expert decision-making, and driving real revenue outcomes. This leaves a multi-billion dollar gap that remains fundamentally unsolved.

## First-Mover Advantage & Competitive Moat

Early entry into B2B sectors and partnerships with platforms like Google, have resulted in high customer stickiness and competitive barriers through deep industry know-how and a full-stack solution for high-value verticals (finance, e-commerce, insurance).

## Global Strategic Footprint

Nasdaq-listed company with offices across Southeast Asia and North America drives expert integration, deployment, and operational capabilities.

## Robust Financials

FY 2025 revenue grew 17.9% YoY with positive net income, demonstrating strong profitability and sustainable growth.

# The Shift Investors Can't Ignore

Enterprise AI is changing. The companies that win **deliver outcomes** — not tools.

PAST

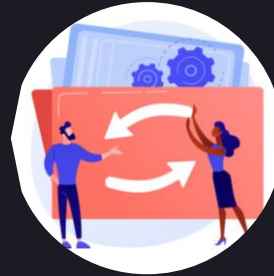


## Software Era

AI tools → humans operate →  
slow, inconsistent output. Seat-  
based SaaS model



NOW



## Transition Era

AI deployed → 95% fail ROI test\*  
→ wasted enterprise budgets.



FUTURE



## AI Labor Era

AI delivers outcomes directly →  
scales without headcount.

# The Trillion \$ Gap

Enterprises have AI. But AI doesn't understand their business, their expertise, or their customers.

01

## No Private Knowledge

LLMs don't know your products, clients, pricing, or history

02

## No Process Alignment

General AI ignores workflows, compliance, and domain rules

03

## No Expert Judgment

AI cannot replicate the nuanced decisions of top performers

04

## No Revenue Impact

95% of AI deployments show little measurable revenue lift\*

Enterprises don't need more AI tools. They need AI that **acts like their best expert.**

# Introducing: The AI Labor System

A digital platform that creates and delivers expert AI labor at scale.

## Not

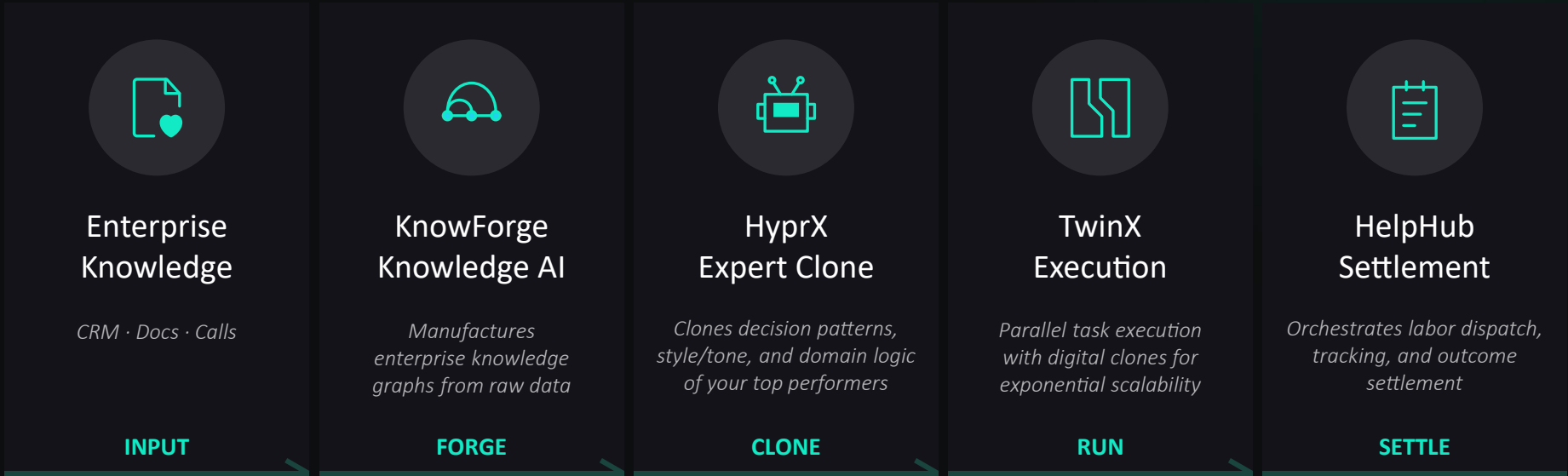
- ⊗ A chatbot or Q&A interface
- ⊗ An API / LLM SDK provider
- ⊗ A license-based SaaS product
- ⊗ A consulting engagement
- ⊗ A custom AI project

## HPAI Delivers

- ✓ Qualified Sales Leads
- ✓ Booked Appointments
- ✓ Customer Service Outcomes
- ✓ Revenue-Per-Interaction
- ✓ Scalable, Expert AI Labor

# The AI Labor “Factory”

Five integrated layers — from raw enterprise data to **measured revenue outcome**



Proprietary Knowledge → Expert Judgment → Scalable Delivery → Results Settlement

# Product Evolution = Productivity Evolution

HPAI's product portfolio follows a clear evolutionary path



## AI Assist Co-Pilot

- Real-time guidance on what to ask and how to respond
- Removes the need for extensive training; enables rapid onboarding
- Significantly reduce training costs

### RESULT

Ordinary employees = Professional employees



## TwinX Avatars

- One person controls 2–5 AI avatars
- Parallel task execution: inbound, outbound, multi-customer handling
- Humans retain decision authority

### RESULT

1 person = multiple parallel workstations



## HyprX Expert

- Replicates an expert's cognitive paths and judgment logic
- Designed for high-value industries: finance, insurance, consulting
- Moves from "per-seat" pricing to "per-expert capability" pricing

### RESULT

Expert supply becomes scalable

# Data to Revenue in 10–15 Days

A **repeatable, standardized production line** — not a custom project. Each deployment is faster than the last.



1

## Data Import

*CRM, logs, SOPs ingested*



2

## Knowledge Modeling

*Private AI knowledge graph*



3

## Expert Training

*Top performer behaviors cloned*



4

## AI Deployment

*Agents live across channels*



5

## Multi-Instance

*Rapid scaling*



6

## Real-Time Learning

*Continuous optimization*



7

## Market Expansion

*New verticals & geographies*



8

## Results Settlement

*Quantifiable, trackable, auditable*

# A step-by-step framework to deploy, scale, and monetize AI labor

## 3 Stages of AI Labor: From AI-Assisted Humans to Human-AI Integration



### Launch: AI Empowers Humans

- Action: Deploy AI assistants, ingest knowledge, train digital replicas
- Product: AI Assist Copilot
- Value: +30–50% productivity; -60% training time
- Monetization: Subscription or outcome-based pricing

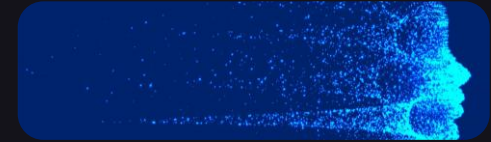
1



### Accelerate: AI Replaces Humans

- Action: AI handles workflows; one human manages multiple AI agents
- Product: HyprX + TwinX
- Value: 60–80% reduction in manual workload; 3–10x productivity per employee
- Monetization: Subscription or outcome-based

2



### Scale: AI + Human Integration

- Action: Dynamic orchestration, continuous learning, pay-for-results
- Product: HelpHub + full product suite
- Value: 30-70% cost reduction; ROI in 1-3 months
- Monetization: Fully outcome based

3

Enable enterprises to adopt AI with zero risk: Start by assisting humans → then replicate humans → then scale

# How We're Different

## Low-Skill Labor

## Expert-Level Digital Replicas



### Ordinary AI Agents

- ✘ Workflow automation, skill stacking**  
*Only capable of executing predefined, simple tasks*
- ✘ Dependent on general-purpose LLMs; prone to hallucination**  
*Cannot guarantee accuracy or consistency*
- ✘ Low barrier to entry**  
*Easily replicable, high commoditization*
- ✘ Sold as tools / seats**  
*Linear revenue growth with clear ceiling*



### HELPORT AI Expert Digital Replicas

- ✔ Proprietary knowledge + expert decision pathways**  
*Replicates the thinking patterns and decision logic of top performers*
- ✔ Minimized hallucination via private data grounding**  
*Outputs are traceable, verifiable, and reliable*
- ✔ World-class knowledge replication capabilities, strong moat**  
*Expert replication in 1–7 days with high technical barriers*
- ✔ Monetized by outcomes (i.e. per lead / per appointment)**  
*Aligned with customer results; tied to value creation*

What enterprises struggle with is not replacing low-skilled labor but **replicating expert knowledge and experience at scale** — this is our core moat.

# Why We Win

LLM vendors have models. SaaS has tools. BPOs have people. **HPAI has all three.**

Capability	LLM Vendors	SaaS Tools	BPO Firms	HPAI
Private Enterprise Knowledge	✗	✗	~	✓
Expert Judgment Replication	~	✗	~	✓
End-to-End Workflow Execution	✗	✗	✓	✓
Performance-Based Pricing	✗	✗	✗	✓
10–15 Day Deployment	✗	~	✗	✓
Non-Linear Scaling	~	~	✗	✓

# Already Proven at Scale

Not pilots. Not experiments. Live enterprise deployments generating **measurable outcomes**.



## Google Cloud

*Government & Healthcare*

AI co-pilot across regulated government and healthcare contact environments



## Leading Global Logistics Provider

*Logistics*

Selected after global competitive evaluation — beating multiple AI vendors worldwide



## Atome

*FinTech / BNPL*

40% revenue share model — landmark performance-based partnership structure



## China Minsheng Bank

*Banking / Mastercard*

AI-powered financial contact center with proven compliance track record



## Yongan Insurance

*Insurance*

First AI labor deployment in the insurance vertical — industry's only live case



**40,000+**

Active Software Users



**Tier-1**

Global Enterprise Clients



**3**

Continents of Operation



**Profitable**

4 Consecutive Years

# Operating in Large, Labor-Intensive Markets

Replacing human labor and automating processes across large-scale customer interaction workflows.



\$30B

Customer Engagement Software



\$100B

Contact Center Outsourcing



\$250B+

In-House Enterprise Customer Communications

Sources: Grand View Research, Everest Group, Company Research

# Performance-Based Revenue

## Real Customer Examples

### Mortgage Sales

**\$10**

*per Qualified Lead*

Paid only when HPAI delivers a verified sales-ready lead

### Solar Sales

**\$200**

*per Booked Appointment*

Pay only when a qualified meeting is confirmed

### Debt Collection

**Rev%**

*Revenue Share*

Debt collection model — full alignment of incentives, zero upfront cost

### For Enterprise Clients

- Zero upfront investment required
- No implementation risk
- Immediate measurable ROI from day one

### For HPAI Growth Engine

- Revenue scales with client success
- Non-linear, compounding growth model
- Client success = HPAI success

# Financial Performance

Profitable Today. Hypergrowth Tomorrow.



**\$34.9M**

2025 Revenue



**4X**

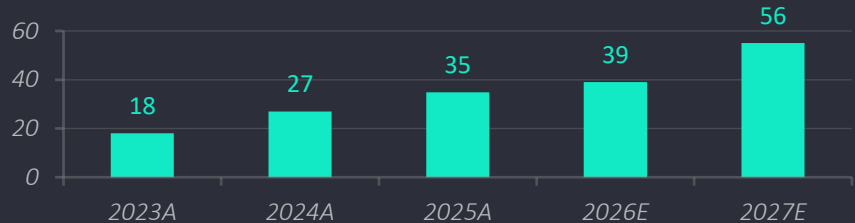
Consecutive Profitable Years



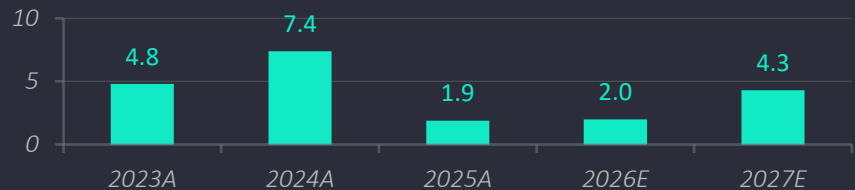
**17.9%**

Revenue Growth (FY25)

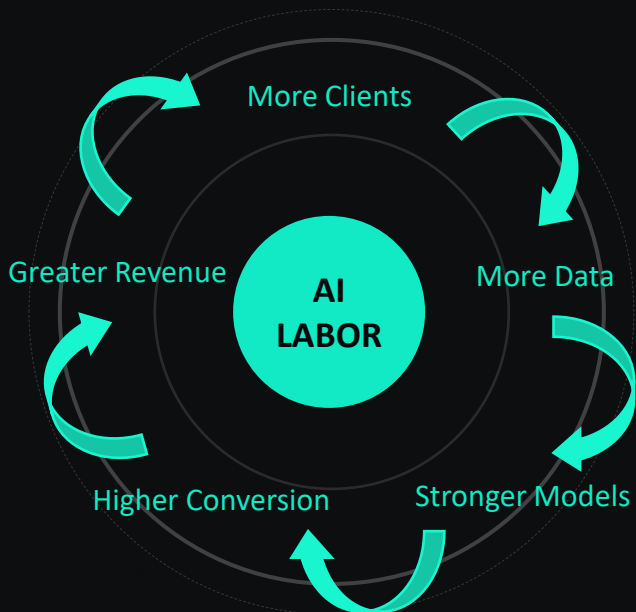
Revenue (\$M)



Net Income (\$M)



Every client makes the system smarter, faster, and more defensible.



Every deployment strengthens the next. Competitive moat becomes more defensible with every client served.

## Network Effects

### Data Moat

Every client adds proprietary training data — the advantage compounds over time.

### Expert IP

Accumulated expert models become irreplaceable — difficult to reverse-engineer.

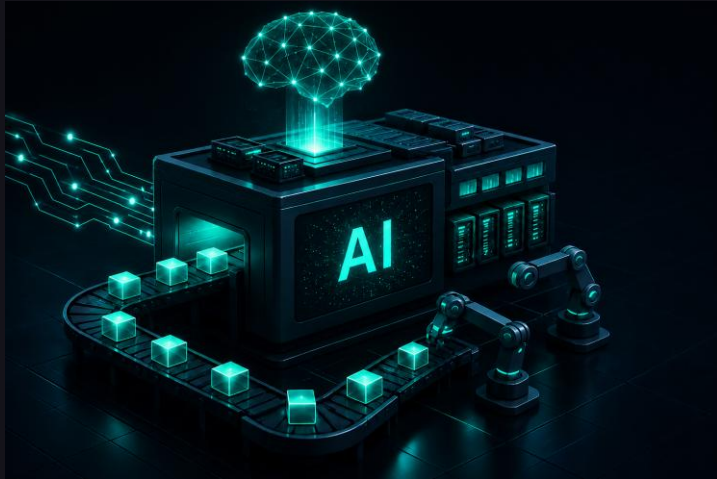
### Pricing Power

Proven ROI justifies premium outcome-based pricing across industry verticals.

### Speed Flywheel

Factory model deploys ~10× faster each cycle — time-to-value shrinks continuously.

# Scaling the Factory



## Sales & Market Expansion

North America enterprise team + Mexico buildout + channel partnerships



## Delivery Capacity

Factory upgrades + deployment automation + QA + infrastructure



## Strategic BPO Acquisitions

Acquire US-based BPO as entry point for rapid enterprise client base expansion and revenue diversification



## R&D + Product

HyprX / TwinX advanced modules + new vertical capabilities



ir@helpport.ai

# Thank You

NASDAQ: HPAI